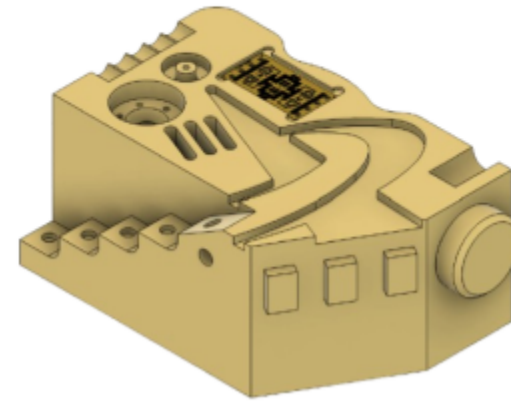


Customer: **DEOM s.r.o.**
 Part name: **1**
 Drawing Nb: **Zone3_traning_part**
 Part Number: **RevB**

Conditions
 Machine: **OGP SmartScope CNC 500**
 SW Version: **ZONE3 16.0.20**
 Temperature: **20 °C**

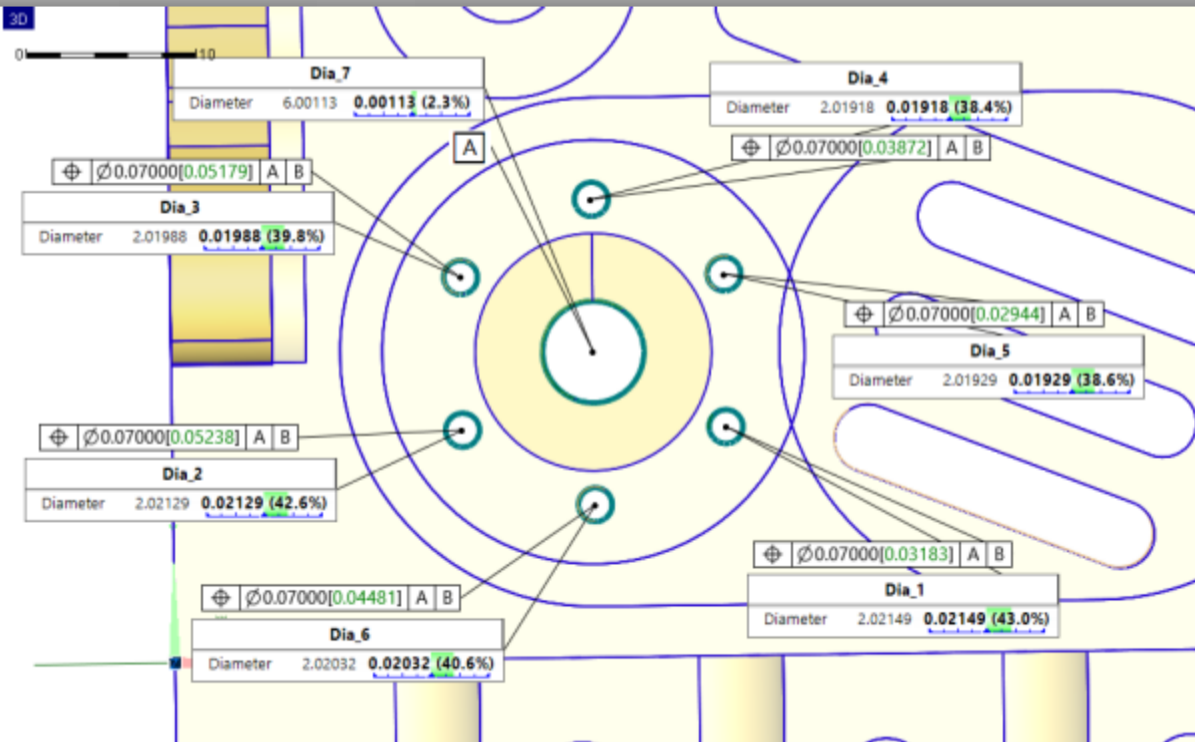
Made by: **Jan Novák**
 Evaluation: **ASME Y14.5M-19**



ZONE3_Training_Part_RevB

Sekvence_1				T: --- °C	CTE: --- µm/m/°C	mm	°
Label	Actual	Nominal	Upper Tol.	Lower Tol.	Dev.	Graphics	
✓ Form_1.Form	0.00385		0.10000		0.00385	0.00385 (3.9%)	
✓ Dia_1.Diameter	2.02149	2.00000	0.05000	-0.05000	0.02149	0.02149 (43.0%)	
✓ Dia_6.Diameter	2.02032	2.00000	0.05000	-0.05000	0.02032	0.02032 (40.6%)	
✓ Dia_2.Diameter	2.02129	2.00000	0.05000	-0.05000	0.02129	0.02129 (42.6%)	
✓ Dia_3.Diameter	2.01988	2.00000	0.05000	-0.05000	0.01988	0.01988 (39.8%)	
✓ Dia_4.Diameter	2.01918	2.00000	0.05000	-0.05000	0.01918	0.01918 (38.4%)	
✓ Dia_5.Diameter	2.01929	2.00000	0.05000	-0.05000	0.01929	0.01929 (38.6%)	
✓ Dia_7.Diameter	6.00113	6.00000	0.05000	-0.05000	0.00113	0.00113 (2.3%)	
✓ Position_7.Position	0.10995	0.00000	0.15000		0.10995	0.10995 (73.3%)	
✓ Position_1.Position	0.03183	0.00000	0.07000		0.03183	0.03183 (45.5%)	

Graphic_1

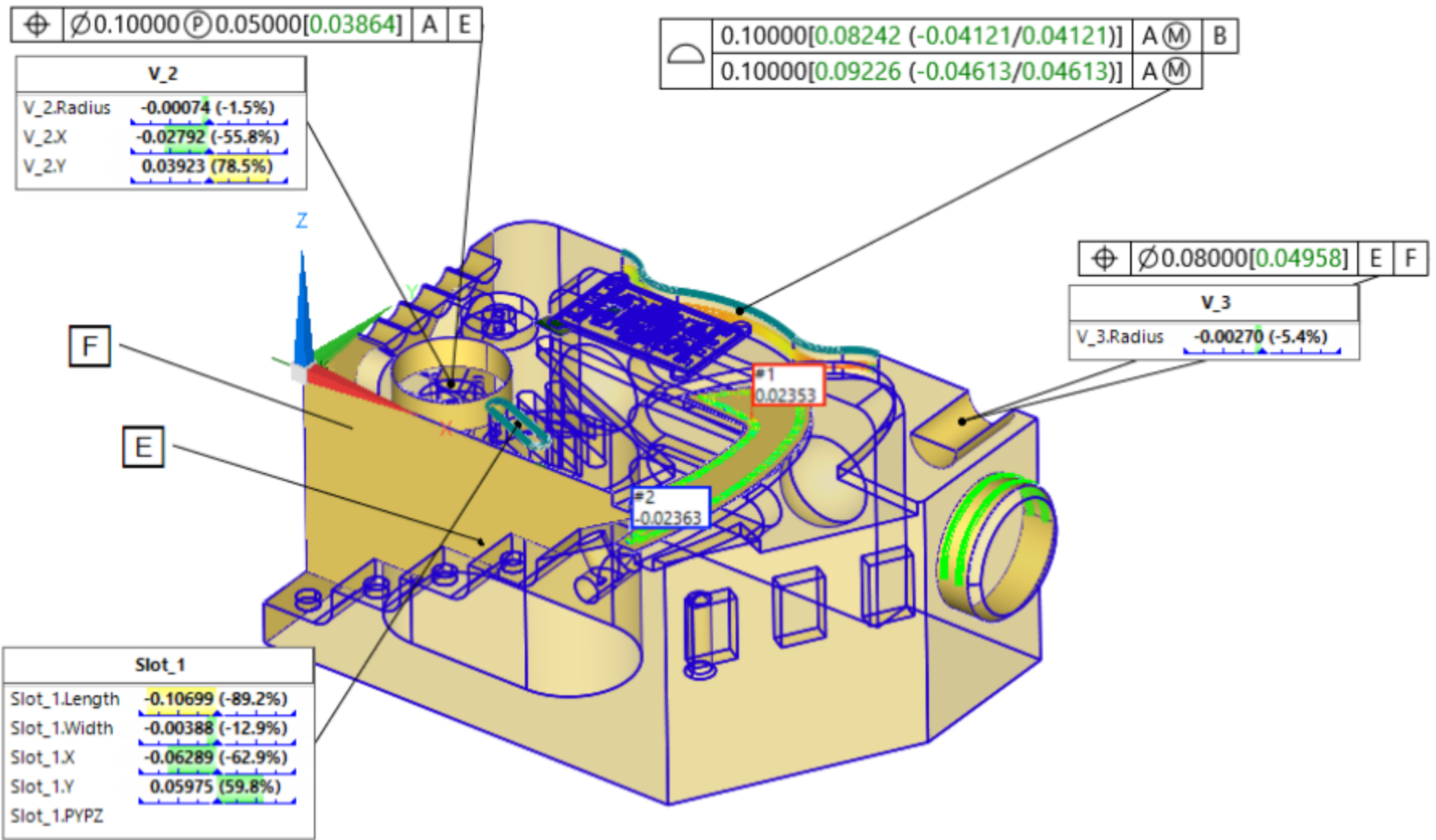


Label	Actual	Nominal	Upper Tol.	Lower Tol.	Dev.	Graphics	
✓ Fl_1.Flatness	0.04143	0.00000	0.07000		0.04143	0.04143 (59.2%)	
✓ Fl_2.Flatness	0.02122	0.00000	0.05000		0.02122	0.02122 (42.4%)	
✓ Profil_2.Line Profile	0.25337	0.00000	0.50000		0.25337	0.25337 (50.7%)	
✓ V_2.Radius	12.49926	12.50000	0.05000	-0.05000	-0.00074	-0.00074 (-1.5%)	
✓ V_2.X	24.97208	25.00000	0.05000	-0.05000	-0.02792	-0.02792 (-55.8%)	
⚠ V_2.Y	18.03923	18.00000	0.05000	-0.05000	0.03923	0.03923 (78.5%)	
✓ V_3.Radius	5.99730	6.00000	0.05000	-0.05000	-0.00270	-0.00270 (-5.4%)	

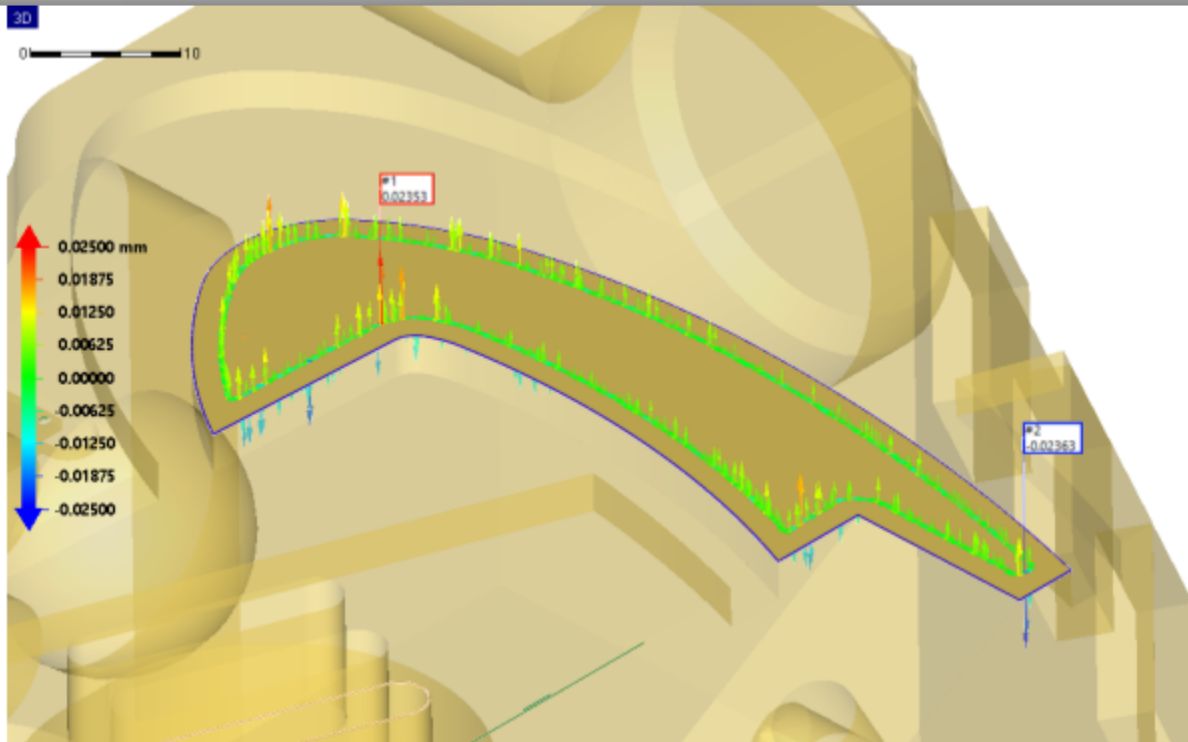
✓	Position_9.Position	0.03864	0.00000	0.10000	0.03864	0.03864 (38.6%)
✓	Position_10.Position	0.04958	0.00000	0.08000	0.04958	0.04958 (62.0%)

Graphic_8

3D

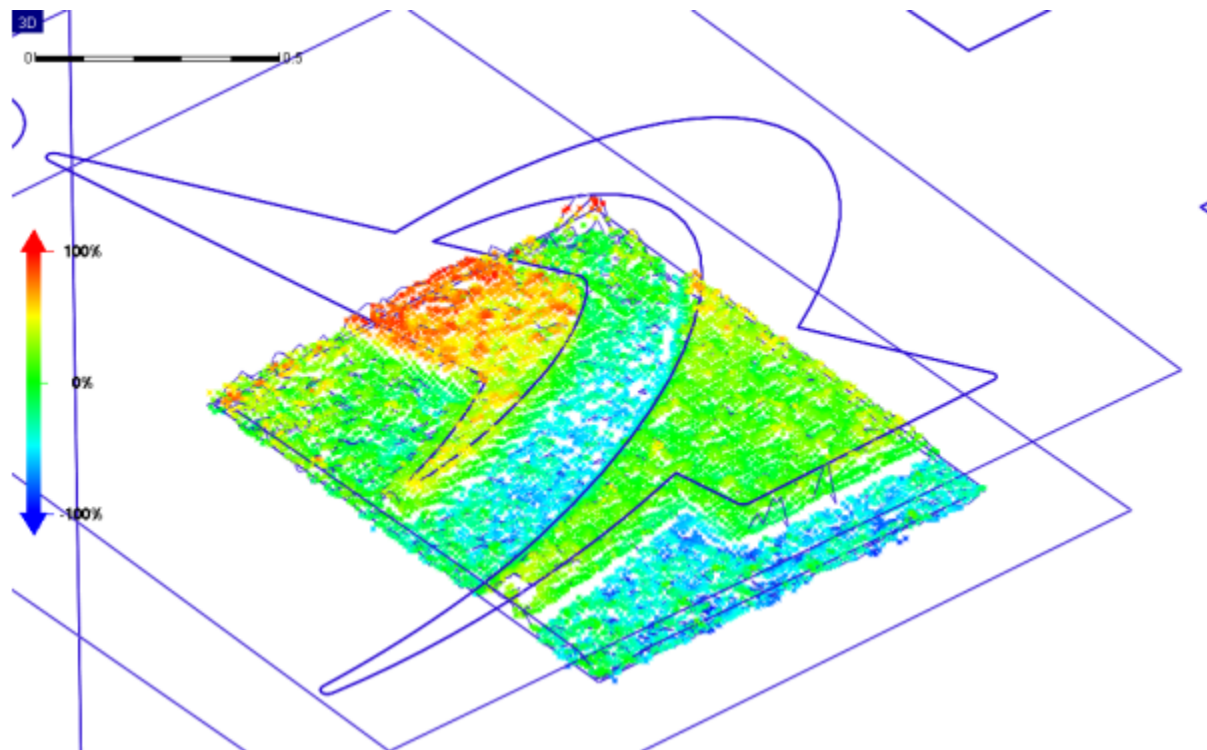


Graphic_2



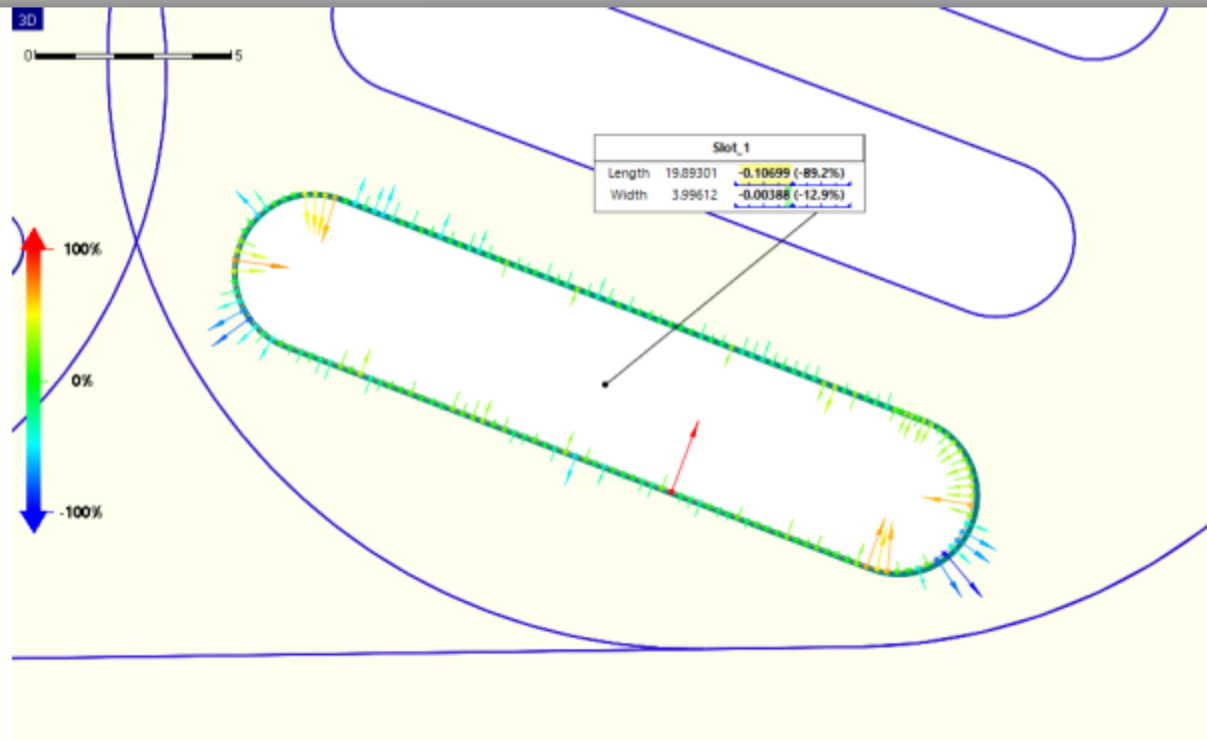
	Label	Actual	Nominal	Upper Tol.	Lower Tol.	Dev.	Graphics
✓	Point_9.X	80.04137	80.00000	0.10000	-0.10000	0.04137	0.04137 (41.4%)
✓	Point_9.Y	44.67679	44.70000	0.10000	-0.10000	-0.02321	-0.02321 (-23.2%)
⚠	Point_9.Z	-0.04883	0.00000	0.05000	-0.05000	-0.04883	-0.04883 (-97.7%)
✓	Point_8.X	75.27222	75.00000	0.50000	-0.05000	0.27222	0.27222 (54.4%)
⚠	Point_8.Y	40.45389	40.00000	0.50000	-0.05000	0.45389	0.45389 (90.8%)
✓	Point_8.Z	-0.06088	0.00000	0.10000	-0.10000	-0.06088	-0.06088 (-60.9%)

Graphic_7



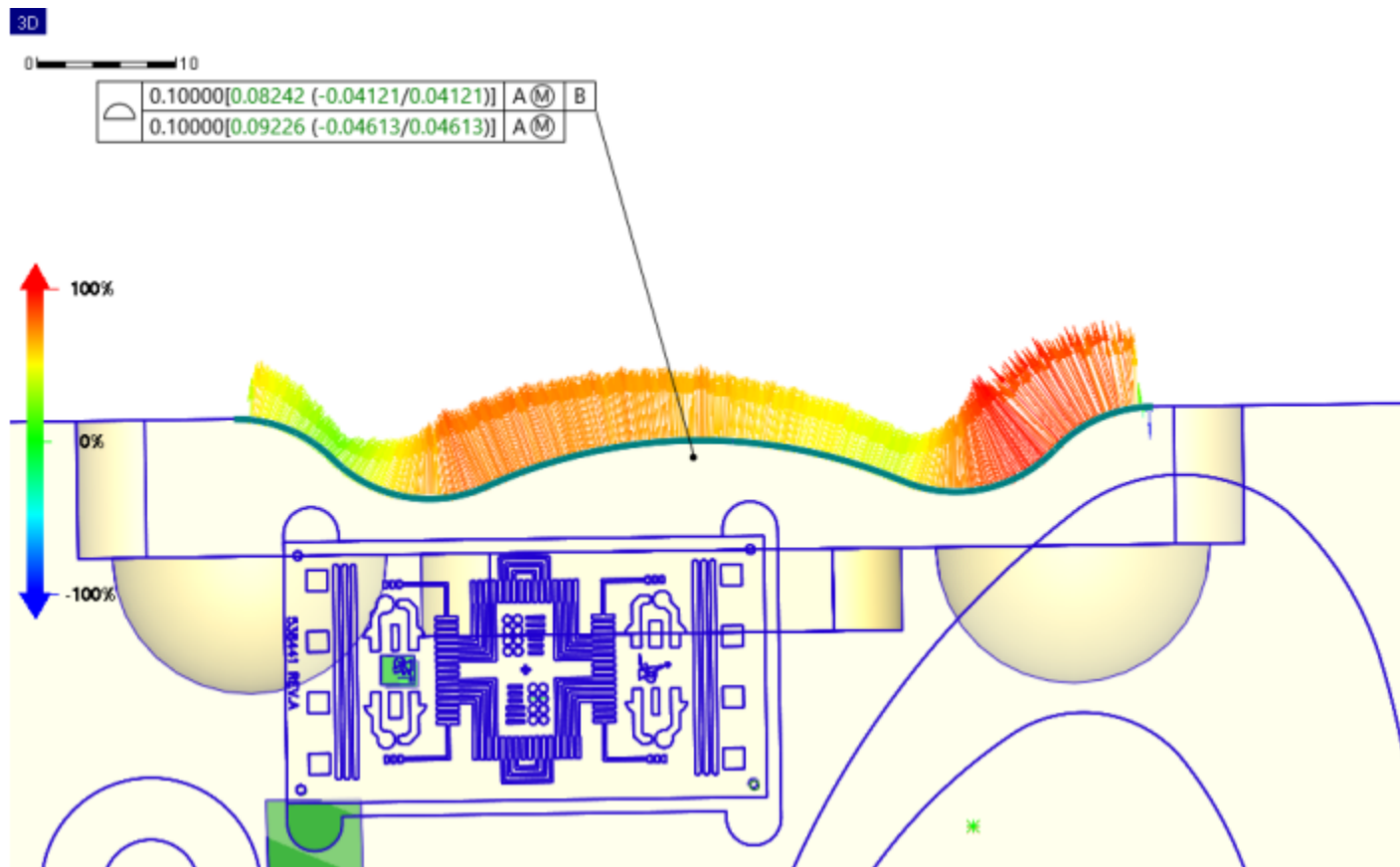
Label	Actual	Nominal	Upper Tol.	Lower Tol.	Dev.	Graphics
✓ Dia_8.Diameter	0.66479	0.63500	0.05000	-0.05000	0.02979	0.02979 (59.6%)
Dia_8.X	31.09154	31.01480	0.00000	0.00000	0.07674	
Dia_8.Y	47.91161	47.99140	0.00000	0.00000	-0.07979	
⚠ Slot_1.Length	19.89301	20.00000	0.12000	-0.12000	-0.10699	-0.10699 (-89.2%)
✓ Slot_1.Width	3.99612	4.00000	0.03000	-0.03000	-0.00388	-0.00388 (-12.9%)
✓ Slot_1.X	48.56355	48.62644	0.10000	-0.10000	-0.06289	-0.06289 (-62.9%)
✓ Slot_1.Y	9.82620	9.76645	0.10000	-0.10000	0.05975	0.05975 (59.8%)
Slot_1.PYPZ	180.0026	180.0000	0.0000	0.0000	0.0026	

Graphic_3



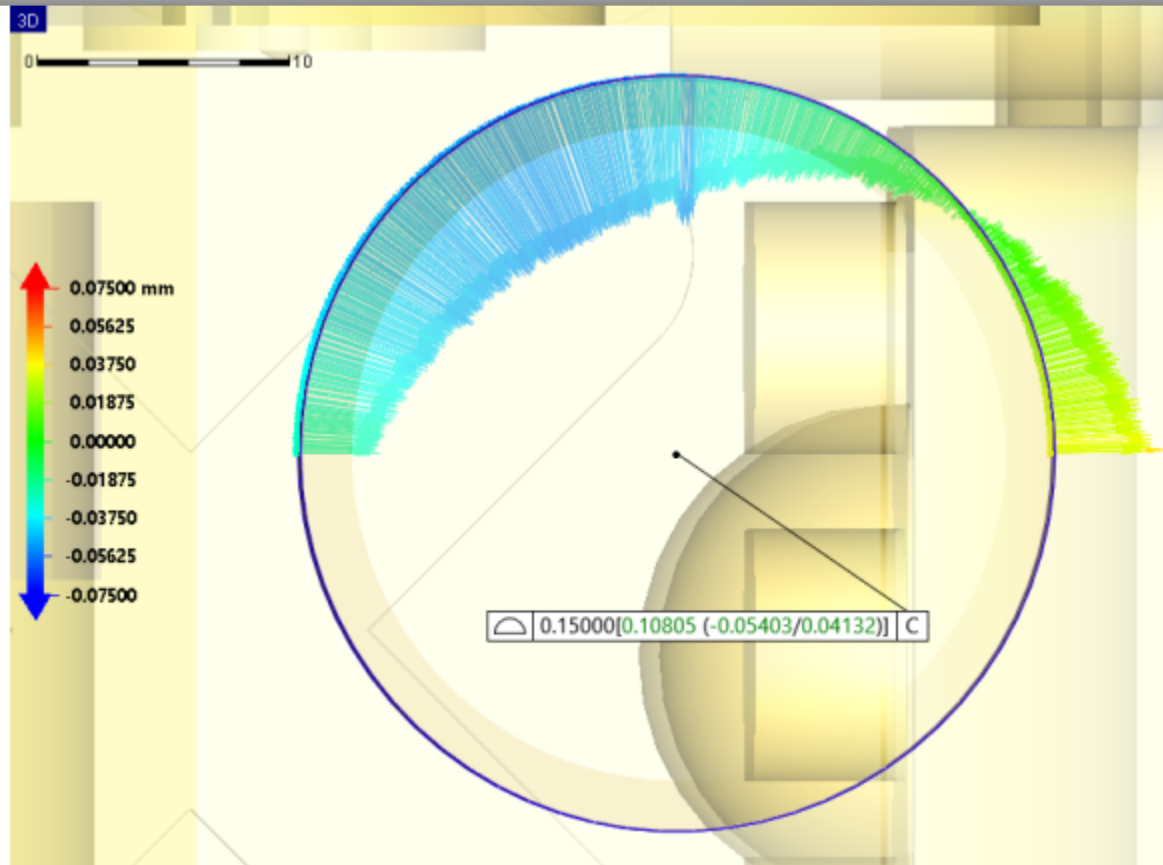
Label	Actual	Nominal	Upper Tol.	Lower Tol.	Dev.	Graphics
⚠ Profil_plochy_1.Composite Surface	0.08242	0.00000	0.10000		0.08242	0.08242 (82.4%)
⚠ Profil_plochy_1.Lower Surface Profile	0.09226	0.00000	0.10000		0.09226	0.09226 (92.3%)

Graphic_4



Label	Actual	Nominal	Upper Tol.	Lower Tol.	Dev.	Graphics
✓ Profil_plochy_2.Surface Profile	0.10805	0.00000	0.15000		0.10805	0.10805 (72.0%)
✓ Dia_9.Diameter	0.66899	0.63500	0.05000	-0.05000	0.03399	0.03399 (68.0%)
Dia_9.X	64.08570	64.00940	0.00000	0.00000	0.07630	
Dia_9.Y	47.86421	47.99140	0.00000	0.00000	-0.12719	
✓ Dia_10.Diameter	0.66800	0.66800	0.05000	-0.05000	0.00000	0.00000 (0.0%)
Dia_10.X	16.99671	16.99671	0.00000	0.00000	0.00000	
Dia_10.Y	6.36831	6.36831	0.00000	0.00000	0.00000	
✓ Dia_11.Diameter	0.67192	0.63500	0.05000	-0.05000	0.03692	0.03692 (73.8%)
Dia_11.X	16.99579	17.00530	0.00000	0.00000	-0.00951	
Dia_11.Y	7.13454	7.13740	0.00000	0.00000	-0.00286	
✓ Dia_12.Diameter	0.67131	0.63500	0.05000	-0.05000	0.03631	0.03631 (72.6%)
Dia_12.X	17.75547	17.76730	0.00000	0.00000	-0.01183	
Dia_12.Y	7.13476	7.13740	0.00000	0.00000	-0.00264	
✓ Position_8.Position	0.02425	0.00000	0.05000		0.02425	0.02425 (48.5%)

Graphic_5





Tel.: +420 273 160 600

Email: deom@deom.cz

DEOM s.r.o.
Jinonická 80
158 00 Praha 5